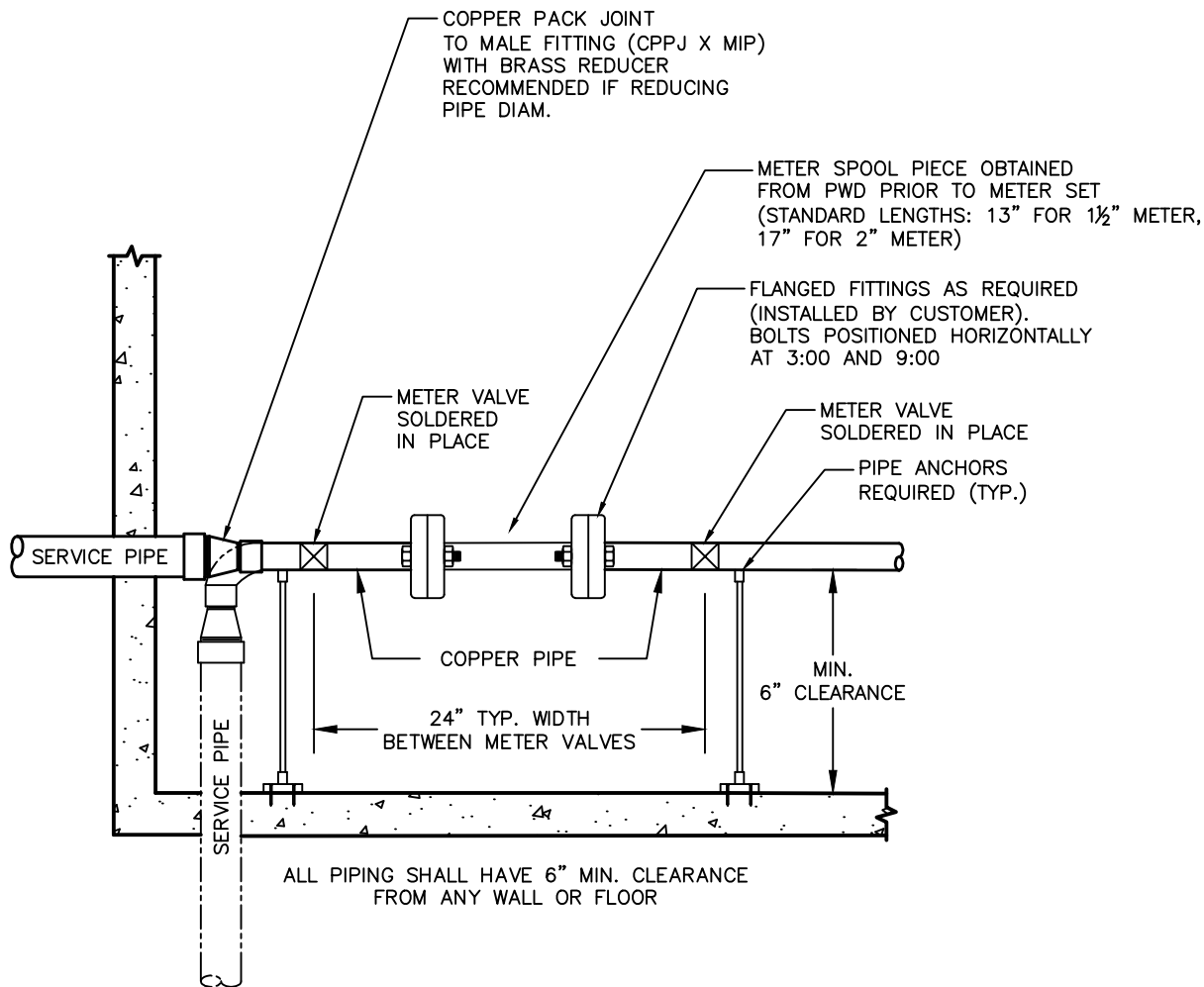


NOTES

1. PORTLAND WATER DISTRICT (PWD) WILL SUPPLY THE WATER METER AND, PRIOR TO SCHEDULED INSTALLATION, A STANDARD METER SPOOL PIECE. ALL OTHER MATERIALS, INCLUDING VALVES AND FLANGED FITTINGS, TO BE INSTALLED BY CUSTOMER.
2. THE METER WILL BE INSTALLED BY PWD. ONLY PWD PERSONNEL SHALL OPERATE SERVICE VALVES.
3. THE METER MUST BE LOCATED DIRECTLY AFTER THE SERVICE PIPE ENTERS THE BUILDING. AT THE METER SET LOCATION CUSTOMER WILL INSTALL A SPOOL PIECE (OBTAINED FROM PWD), FLANGED FITTINGS AS REQUIRED, AND TWO METER VALVES (BALL VALVE TYP.), WITH 6" MINIMUM CLEARANCE BETWEEN THE SERVICE PIPE AND ANY WALL OR FLOOR.
4. THE METER SHALL NOT BE PERMANENTLY ENCLOSED WITHOUT SUFFICIENT ACCESS FOR FUTURE SERVICE. THERE SHALL BE A MINIMUM OF 36" OF WORKING SPACE TO ENABLE SERVICING OF THE METER.
5. BACKFLOW PREVENTION MAY BE REQUIRED BY PWD DEPENDING ON TYPE OF SERVICE AND DEGREE OF CROSS-CONNECTION HAZARD. IF REQUIRED, AN APPROPRIATE DEVICE SHALL BE INSTALLED DOWNSTREAM OF METER AND METER VALVES PRIOR TO METER SET.



**Portland Water District**

ASSET MANAGEMENT & PLANNING DEPARTMENT  
 225 DOUGLASS ST, PORTLAND ME 04104-3553 (207)  
 207-774-5961 • 207-7761-8307 (FAX) • WWW.PWD.ORG

DATE	REVISION	SCALE:	NTS
6/22/15	PIPE MATERIAL	DATE:	06/15/14
10/28/15	METER SPOOL POSITION	DRAWN BY:	TAW
		CHECKED BY:	JRS
		APPROVED BY:	GSJ
		FILE:	WS02.DWG

HORIZONTAL METER INSTALLATION  
 (1-1/2" TO 2")

STANDARD METER SET DETAILS

PROJECT NO: NA

SHEET: 1 OF 1