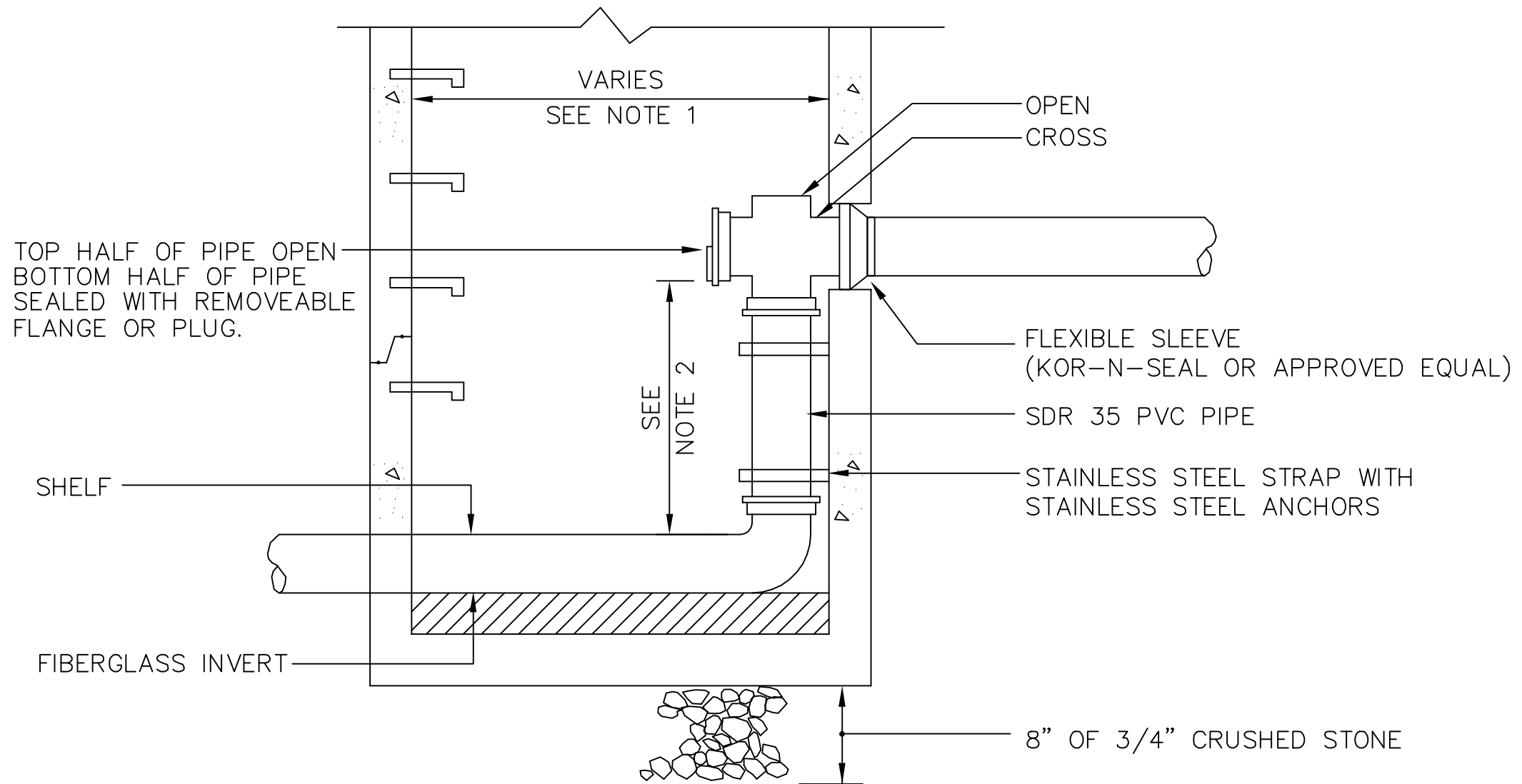
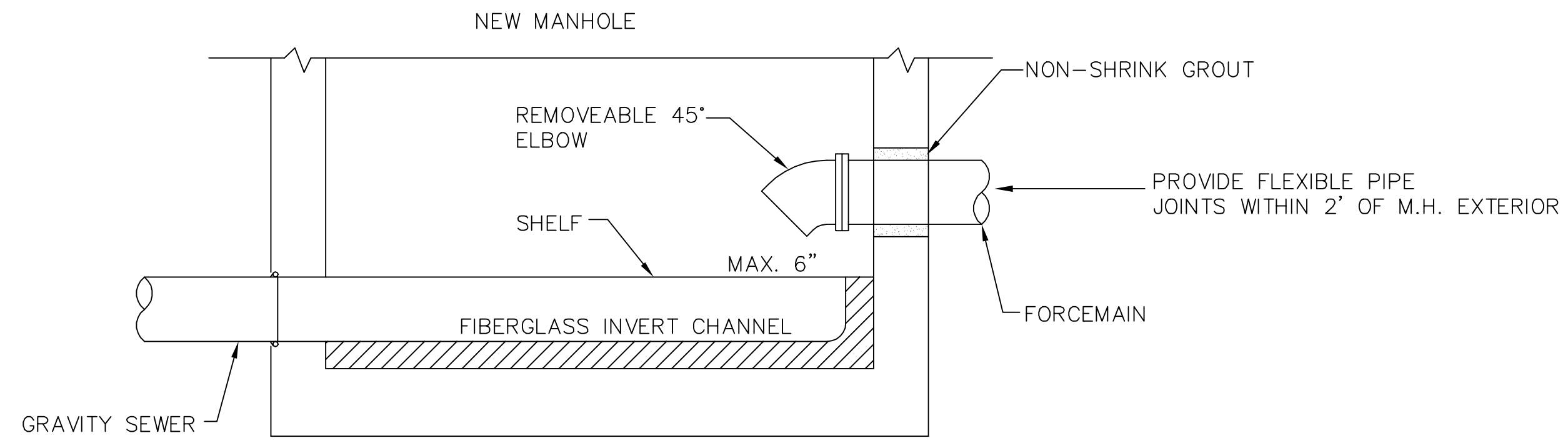


PRECAST MANHOLE

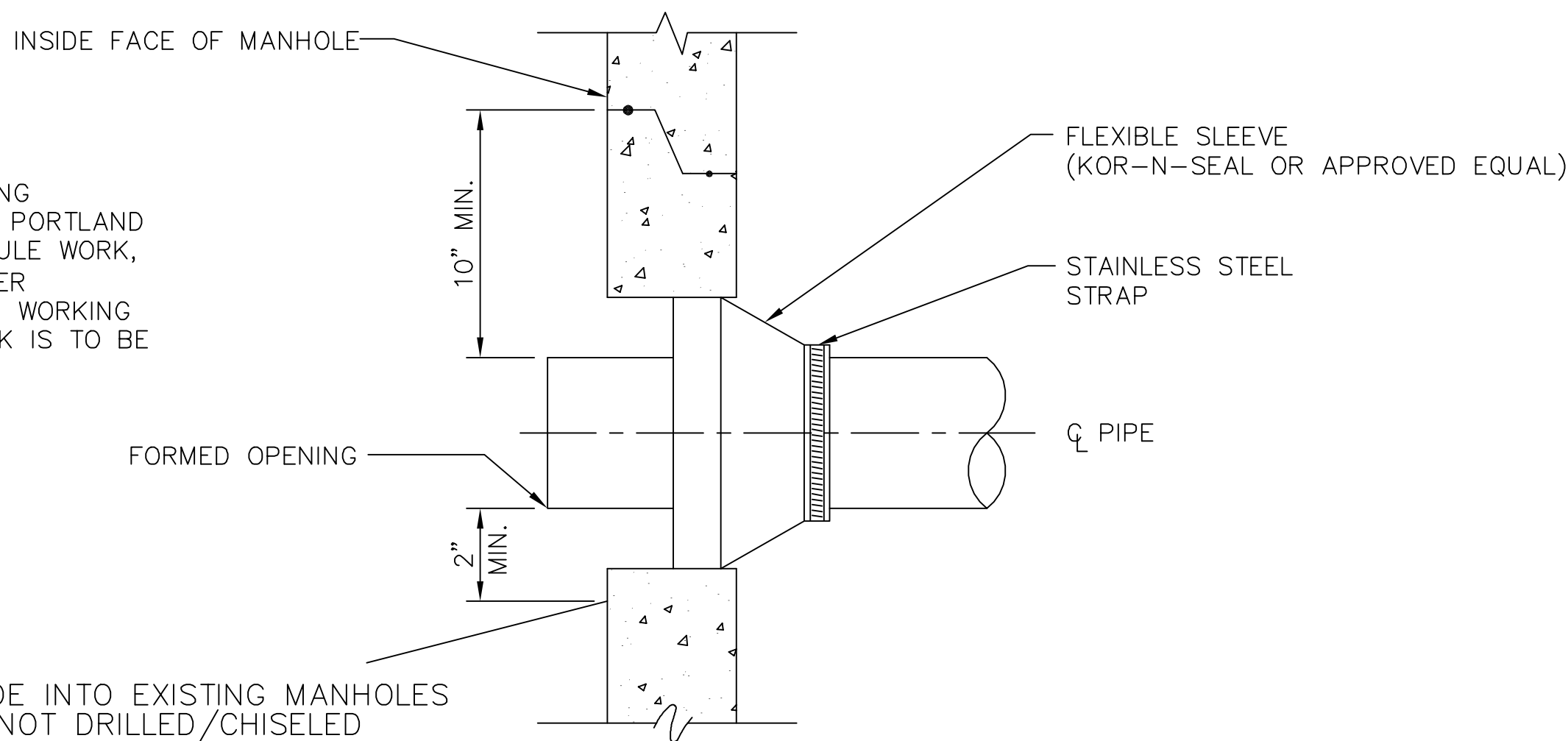


PRECAST DROP MANHOLE

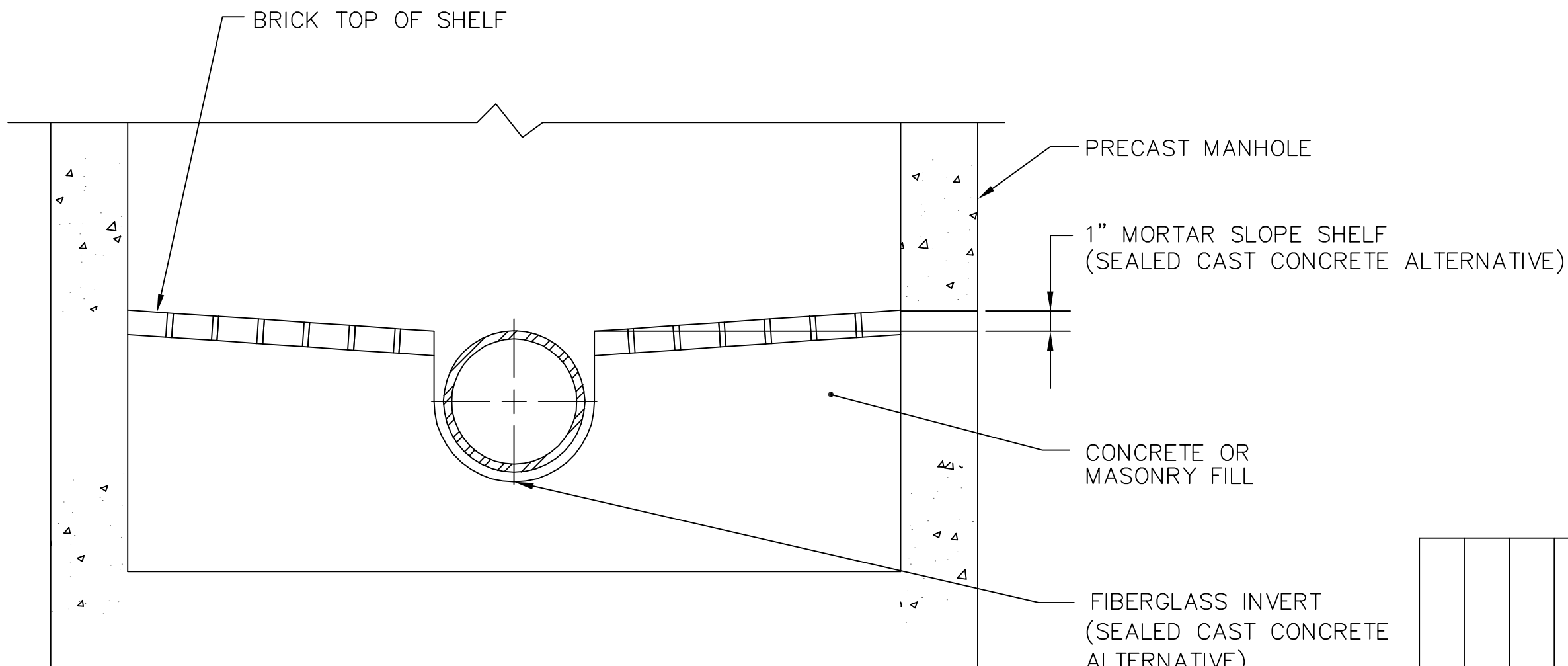


FORCEMAIN TERMINUS

NOTE:
 1. CONNECTION TO EXISTING MANHOLE
 ALL NEW PENETRATIONS INTO EXISTING MANHOLES SHALL BE INSPECTED BY PORTLAND WATER DISTRICT CREWS. TO SCHEDULE WORK, CONTACT THE DISTRICT'S WASTEWATER OPERATIONS DIVISION AT LEAST TWO WORKING DAYS PRIOR TO THE DATE THE WORK IS TO BE PERFORMED.



NEW PIPE TO EXISTING MANHOLE CONNECTION DETAIL - 4" TO 24"



FIBERGLASS CHANNEL INSTALLATION

- NOTES:**
1. USE 4' I.D. M.H. WITH 8" OR SMALLER PIPE
 USED 5' I.D. M.H. WITH 10" OR LARGER PIPE
 2. MINIMUM HEIGHT OF DROP IS 2'-0"
 3. SEE PRECAST MANHOLE SECTION FOR TYPICAL
 4. MANHOLE INFORMATION, INCLUDING NOTES.
 5. PROVIDE DROP PIPE FOR ALL INVERT DIFFERENTIALS GREATER THAN TWO (2) FEET.
 6. CUT OFF TOP 1/3 OF PIPE PLUG.
 7. INSTALL PVC TEE AND PLUG FACING UP AT INSIDE DROP INSTALLATION AT EXISTING MANHOLE LOCATED ON WEST STREET.

SEWER MANHOLE DETAILS				
Portland Water District				
ASSET MANAGEMENT & PLANNING DEPT.				
225 DOUGLASS STREET P.O. 3553 PORTLAND, MAINE 04104-3553				
REVISIONS		DESIGN	CHECK	
PROJECT NUMBER		DRAWN	APPROVED	
CAD FILE	SEW-MH-DET	FIELD BOOK	SCALE	N.T.S.
		DATE		SHEET
				1 OF 1